

# FTB

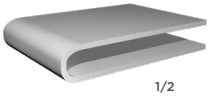
## SMALL PIECE FOLDER & STACKER

The FTB is a highly productive, multi-use folder that folds and stacks full-dry, small pieces. Equipped with air jet folding, the FTB processes up to 900 pieces/hour, depending on the item, the type of fold and the operator's skill.

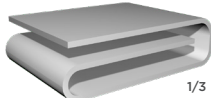


### PRIMARY FOLD

An air jet system is used for the primary fold. The air jet is adjusted to match the size of the article. It can perform 1 fold (in half) or 2 folds (French or 1/3 type).



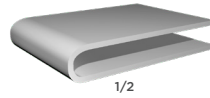
1/2



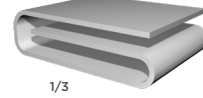
1/3

### SECONDARY FOLD

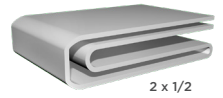
A conveyor reversing system and powerful air jet, perform 1 or 2 cross folds. The elastic belts used in the cross folding contribute to a quality fold.



1/2



1/3



2 x 1/2

## PRODUCT FEATURES

### MAXIMUM PIECE SIZE

- Width: 48 inches (1200 mm) / Length: 92.5 inches (2350 mm)

### INDEPENDENT FEED TABLE

- The folder is fed manually on an independent feed table. The conveyors allow operators to feed linen without affecting production.
- Can be programmed to stop between units.

### PRIMARY FOLDING WITH EXCLUSIVE BLOWING SYSTEM

- An air jet blowing system allows small and medium-sized articles to be folded without stopping the conveyor — improving productivity while maintaining folding quality.

### SECONDARY FOLDING USING REVERSING BELTS AND BLOWING

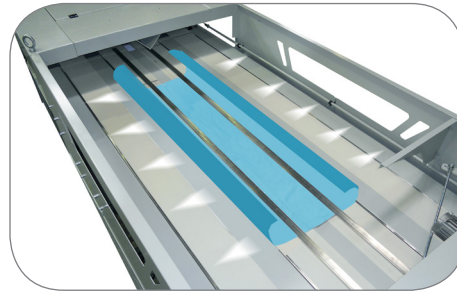
- The elastic belts that perform the cross folding are extremely flexible, providing a high-quality fold while minimizing maintenance downtime.

### EASY-TO-USE TOUCH SCREEN GRAPHIC CONTROL

- The FT MAXI folder incorporates a control and programming system. A system of easy-to-use icons guide the user in operating the machine.



INDEPENDENT FEED TABLE



PRIMARY FOLDING

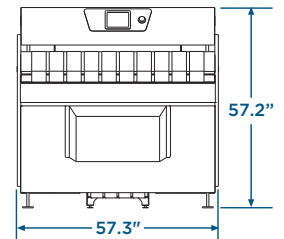


SECONDARY FOLDING

### PRODUCT SPECS

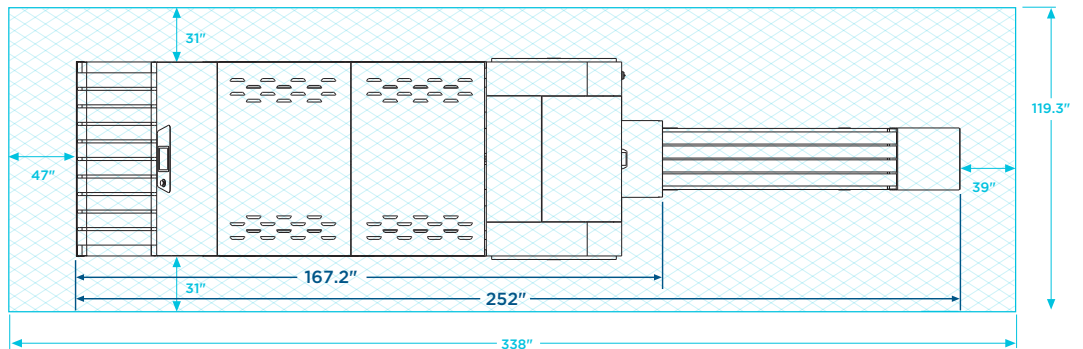
Usable Feed Width <i>inch</i>	48
Feed Height <i>inch</i>	35
Maximum Item Dimensions <i>inch</i>	48 x 92.5
Minimum Item Dimensions <i>inch</i>	10.2 x 9.8
Net Weight <i>lbs</i>	2090
Crated Weight <i>lbs</i>	3630
Machine Width <i>inch</i>	57.3
Machine Depth <i>inch</i>	
machine only	167.2
with stacker	252
Machine Height <i>inch</i>	57.2
Shipping Dimensions <i>inch</i>	
WxDxH	89 x 186 x 70
Electrical Power <i>KVA</i>	4.5
Available Voltages / Wire Conductor / Amp	
Electric	208-240/60/3, 3W+G, 40 Amp
Electric	440-480/60/3, 3W+G, 40 Amp
Compressed Air Connection <i>inch</i>	1/2
Compressed Air Flow <i>cfm</i>	2 @ 87-145 PSI

**FRONT VIEW**

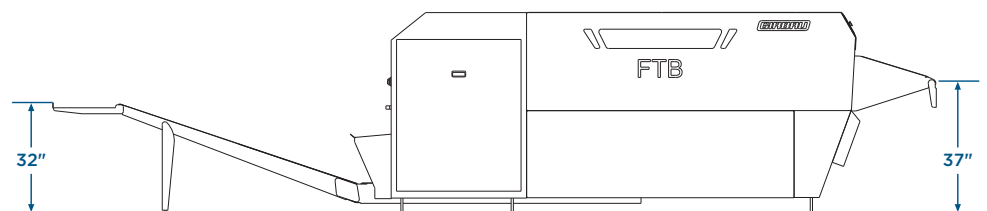


**TOP VIEW**

**Recommended Clearance**  
Total Area = 119.3" by 338"



**SIDE VIEW**



\* Specifications subject to change without notice or obligation. Contact Girbau Industrial at (800) 256-1073 for dimensions not shown or for clarification.